

Connecting JMobile systems to KNX EIB Networks

This documents describes how to use the
KNX (EIBUS) communication driver in
JMobile systems

Copyright © 2008 Sitek S.p.A. – Verona, Italy

Subject to change without notice

The information contained in this document is provided for informational purposes only. While efforts were made to verify the accuracy of the information contained in this documentation, it is provided “as is” without warranty of any kind.

Third-party brands and names are the property of their respective owners.

www.exor-rd.com

Contents

1	Configuring the communication driver	4
1.1	Importing Tags	4
2	Setting up the target device for communication.....	7

1 Configuring the communication driver

The support for KNX (EIBUS) driver has been included in JMobile starting from version 0.80.012.

The driver has been developed directly in native JMobile cross-platform format.

In JMobile Studio create a new Project; from the “Protocols” node of the project tree view, open the Protocol editor and select “eibus” from the list of available driver. Click on the “edit” button in the Configuration column to display the configuration dialog. Figure 1 shows the dialog.

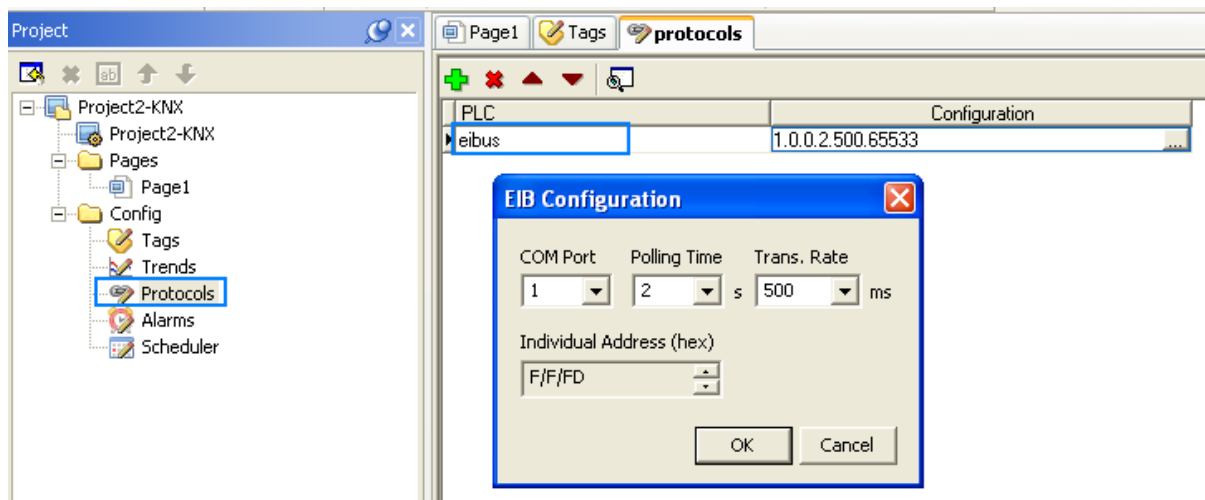


Figure 1

In the configuration dialog the parameters have the following meaning:

- **COM port** is the serial port number on the device.
- **Polling time** has the same meaning as used in legacy UniOP KNX EIB driver; please see Tn250 for further details.
- **Transmission rate** has the same meaning as used in legacy UniOP KNX EIB driver; please see Tn250 for further details.
- **Individual Address** is the panel physical address; it should be assigned at programming time and can not be changed at run time

1.1 Importing Tags

JMobile Suite supports Tag import coming from ETS3 exported file. For all the details about how to export the file from ETS3 programming software, please see Tn250.

Tag import is available in the Tag Editor tool.

From the “Tag” node of the tree project view in JMobile launch the tag editor and select the “Import” option as shown in Figure 2.

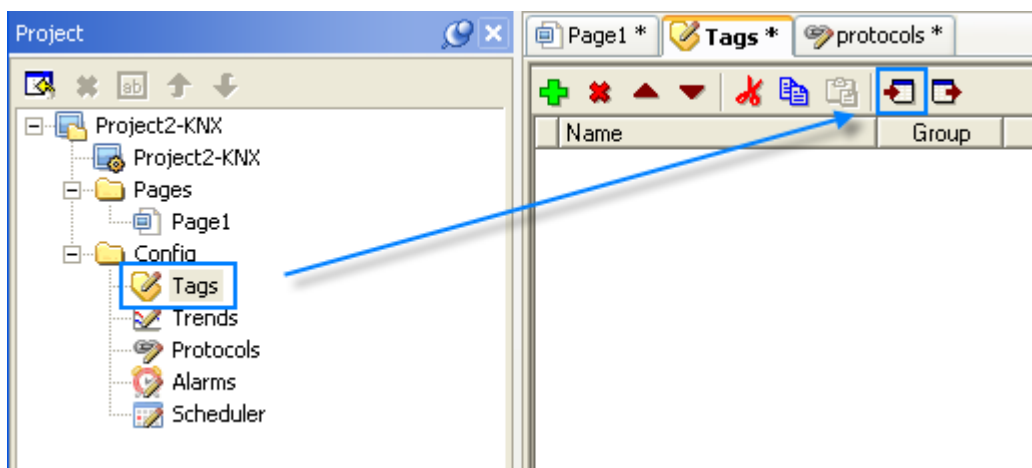


Figure 2

Figure 3 shows the “tag Import” dialog. Select “Native Format” and click the reference button to browse for the exported Tag file.



Figure 3

All the available Tags will be displayed in a temporary grid at the bottom of the Tag Editor screen as shown in Figure 4. Select the tags required and click then the “Import” button to complete the process.

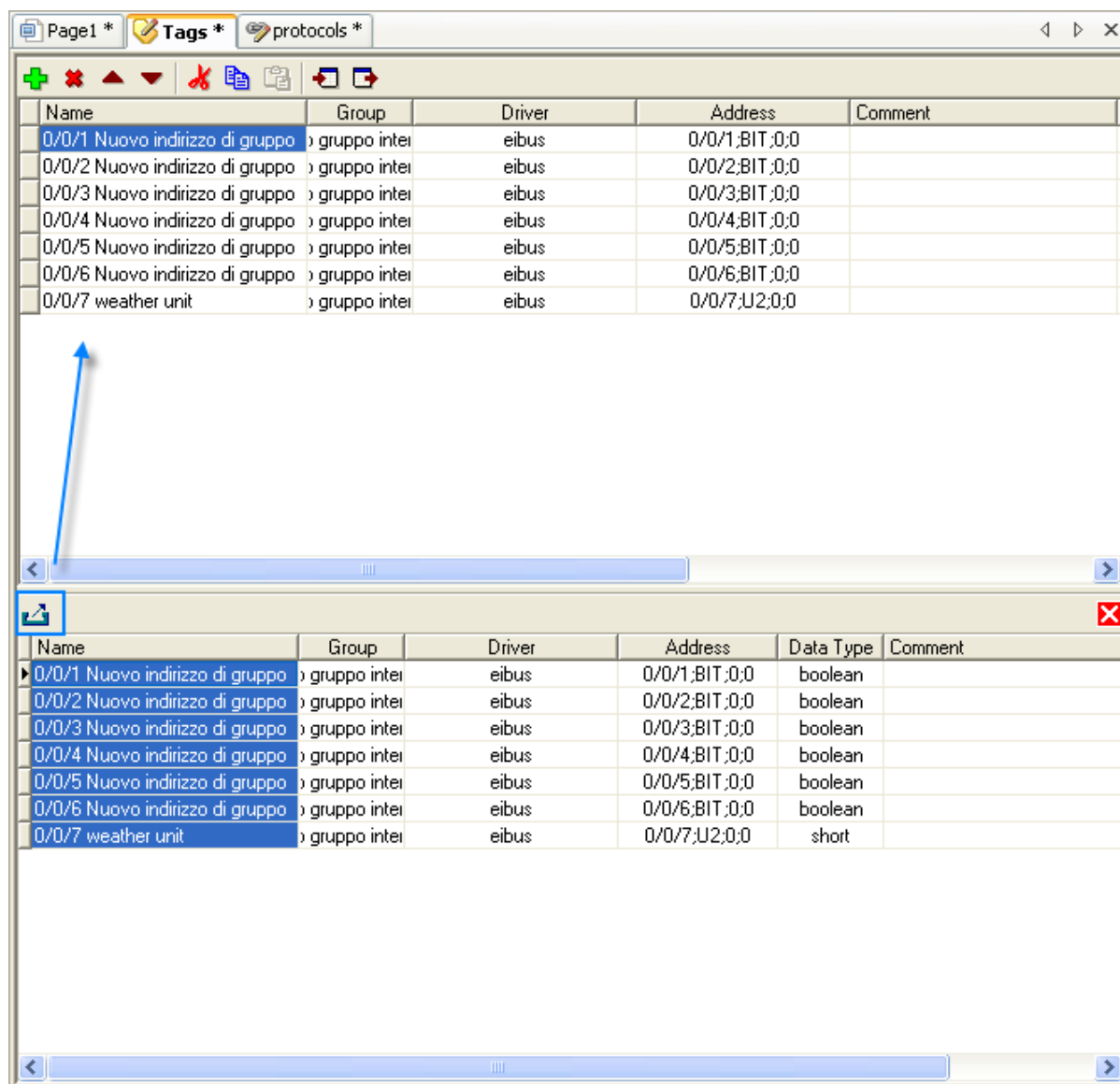


Figure 4

Each Tag has its physical address shown in the “Address” column; click on the “edit” button to display the Tag configuration dialog as shown in Figure 5.

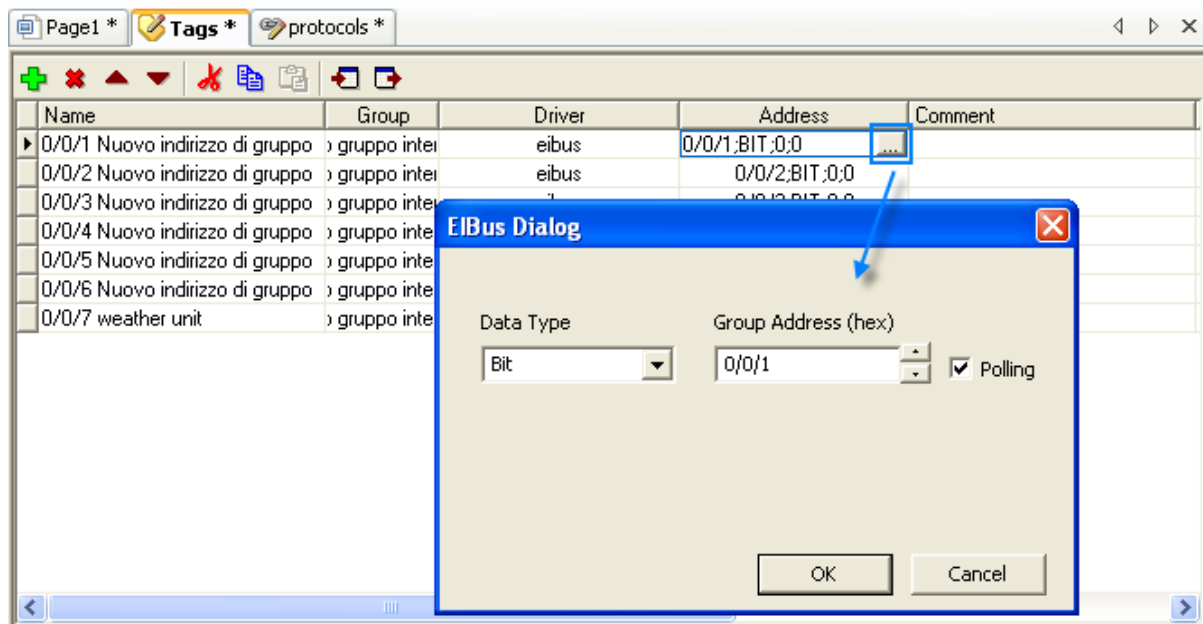


Figure 5

2 Setting up the target device for communication

This chapter refers about how to set up a UniOP T2005 WCE device for proper use of the KNX JMobile driver.

On UniOP T2005 WCE hardware platforms it requires installation of the TCM17 optional communication module for proper bus interface.

Start "Control Panel" from "Start\Settings" menu on the Windows CE unit. Double click on "SMUX Assignment" and assign the COM1 port to "PLC Port" as shown in Figure 6.

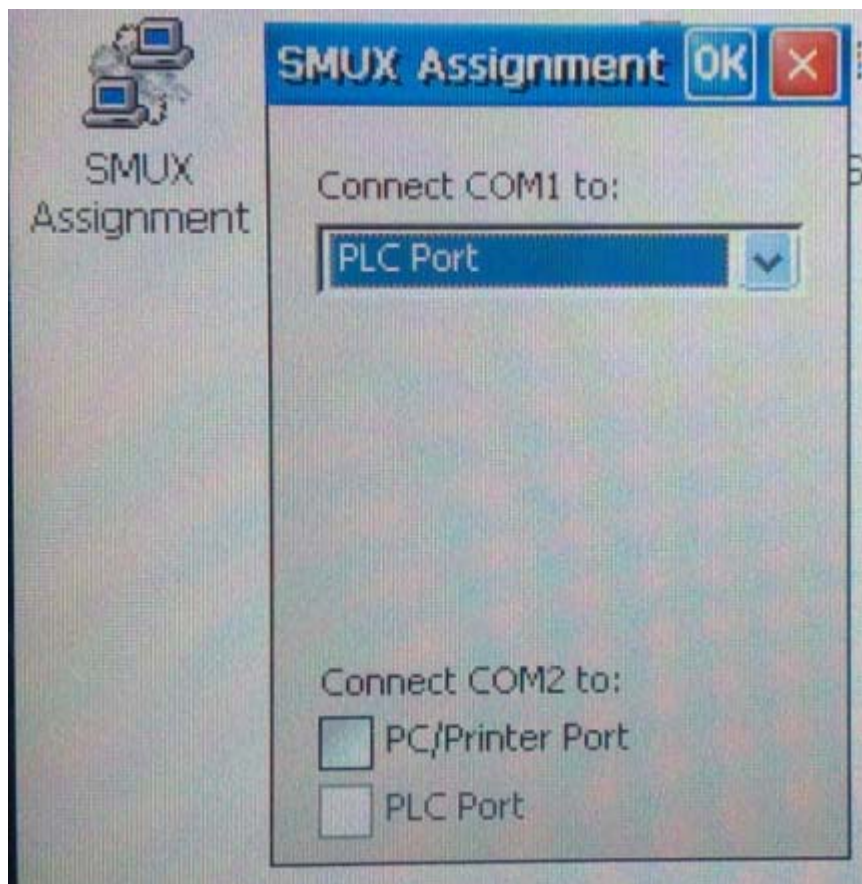


Figure 6

Save the registry using the command "Registry Save" available in "Start\Programs".

Restart the unit.

The panel is now ready to run the JMobile application.