

## DomiOP eBIS50C

The eBIS50C embedded Building Information System (eBIS) is a wall mount touchpanel designed for applications in building automation. It features a 15" TFT color graphic display with touchscreen interface. Support for 64K colors in the brilliant TFT display renders realistic images. The integrated 10/100 Ethernet interface and the modular communication architecture makes it the ideal solution for integration in building networks.



- 15" TFT color display, 64K colors
- XGA (1024x768 pixel) resolution
- Resistive touchscreen
- 10/100 Ethernet interface
- USB host port for flash drives.
- Modular bus interface for KNX EIB (requires optional plug-in modules)
- Compatible with video input module
- Designed for wall/flush mount

### Highlights

The eBIS interface panels are part of the family of touchscreen products. All of the eBIS products support the rich common functionality of the UniOP interface panels:

- Powerful and intuitive programming with the UniOP Designer 6 software
- Supports popular building automation networks such as KNX EIB and others (optional modules required)
- Integrated 10/100 Ethernet port for integration in larger control systems and for programming the device with Designer.
- USB host port for flash drives.
- Dual-driver communication capability
- Vector graphic capabilities including the support of multiple layers and object transparency.
- Video input option
- Display dynamic data in numerical, text, bargraph and graphic image formats
- Data acquisition and trend presentation. Trend data can be transferred to a host computer using the Ethernet connection.
- Analog gauge objects
- Powerful macro editor to configure touchscreen operation
- Recipe data storage. Recipe data can be transferred to a host computer using the Ethernet connection
- Multilanguage applications. The number of runtime languages is limited only by the available memory. All text information in the application can be exported in Unicode format for easier translation.
- Alarms and historical alarm list. Alarm and event information can be printed or transferred to a host computer using the Ethernet connection
- Eight level password protection
- Report printing to serial printer. Reports are freely configurable using Designer
- Ethernet-based UniNet network to share data between UniOP devices and to serve data using UniNet OPC Server
- Wall box available to optimize mounting in all kind of walls
- Optional color faceplates

**Technical Data**

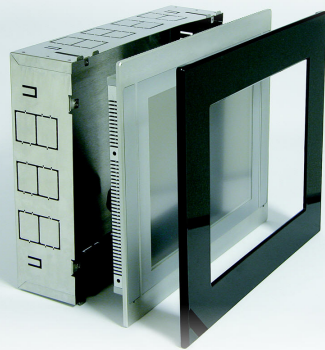
<b>Display</b>	
Type	TFT
Resolution	XGA, 1024x768 pixel
Size	15" diagonal (304x228 mm)
Colors	64K
Backlight	CCFL, 50000 h <sup>(note 1)</sup>
Brightness	200 cd/m <sup>2</sup> typ.
Dimming	Yes
<b>Memory</b>	
User memory	64 MB Flash Card
Alternate user memory	Optional removable 32/64 MB SSFDC memory card
<b>Front panel</b>	
Touch screen	Analog resistive
Function keys	-
System keys	-
User LED's	-
System LED's	-
<b>Interfaces</b>	
PC/Printer port	Yes
PLC port	RS-232, RS-485, RS-422, 20 mA Current Loop
Ethernet port	10/100 Mbit
USB port	Host version 1.1 <sup>(1)</sup>
Aux port (fieldbus)	Yes, with optional modules
DX port (video input)	Yes
Serial programming speed	9600 – 38400 bps
Slot for Local I/O	-
<b>Functionality</b>	
Vector graphics	Yes
Dual driver capability	Yes
Video input	Yes (optional)
Data acquisition and trends	Yes

Recipe memory	Yes. Flash memory storage limited only by available memory <sup>(1)</sup>
UniNet network	Client/Server
Alarms	1024
Event list	1024
Password	Yes
Hardware RTC	Yes, battery backed
Screen saver	Yes
Buzzer	Yes, audible feedback for touch screen
Battery	3 V 285 mA Lithium, non rechargeable, user replaceable, RENATA model CR2430. Replace with same component or equivalent.
<b>Ratings</b>	
Power supply voltage	18 - 30 VDC
Current consumption	Max 1.5 A at 24 VDC
Fuse	Automatic
Weight	Approx 4.3 Kg
<b>Environmental Conditions</b>	
Operating temperature	+5 to 40 °C
Storage temperature	-20 to +70 °C
Operating and storage humidity	5 – 85 % RH non-condensing
Protection class	IP20
<b>Dimensions</b>	
Faceplate LxH	436x347 mm (17.16x13.66")
Cutout AxB	381x296 mm (15.00x11.65")
Mounting depth C	88mm/3.46"
Faceplate thickness D	6mm (0.24")
<b>Dimensions box</b>	
Faceplate HxL	329mm/12.95" 418mm/16.45"
Mounting depth C	94mm/3.7"

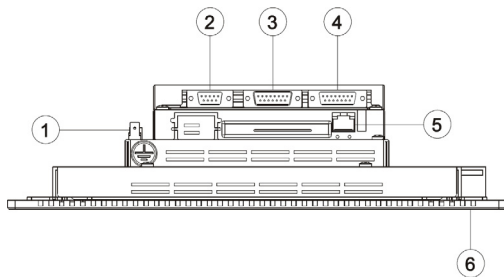
Note 1: operation of the built-in USB interface and recipe storage to flash memory require an appropriate firmware version and use of Designer 6.07 or higher.

The product is designed for installation in residential environments in compliance with the regulations:

Emitted interference & Noise immunity: EN 55022 (CISPR 22)(Class B) EN 55024, EN 50090-2-2 + EN 50090-2-2/A1, EN 60669-2-1, EN 61000-6-1, EN 61000-6-3

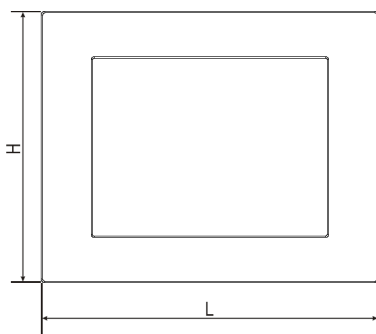


Side and front view



- 1 Power
- 2 Aux Port
- 3 PLC Port
- 4 PC/Printer Port
- 5 Ethernet Port (only for programming)
- 6 USB port for flash memory

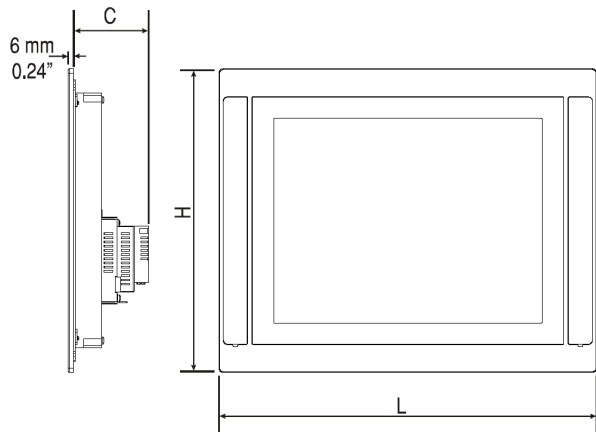
Bottom view



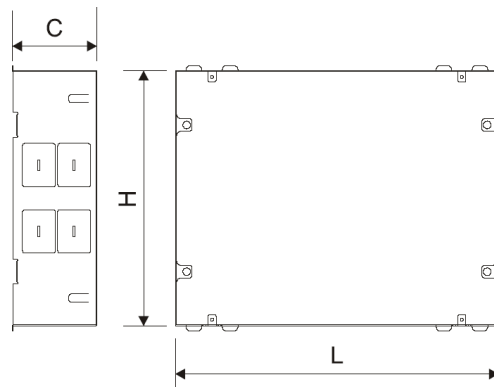
COVER50-xx (Not supplied with panel)



Side and front view



Side and front view



BOX50-01 (Not supplied with panel)

**Ordering Information**

eBIS50C	15" XGA TFT color panel with touchscreen
TCM17C	KNX EIB interface module
BOX50-01	Wall mount box for eBIS50C
COVER50-01	Cover frame for eBIS 50C/150C - black
COVER50-02	Cover frame for eBIS 50C/150C - white
DSOFT020	Designer Software Standard installation version 6 for programming

---

**Tn260**

**Ver. 1.2**

**Copyright © 2008 Sitek S.p.A. – Verona, Italy**

Subject to change without notice

The information contained in this document is provided for informational purposes only. While efforts were made to verify the accuracy of the information contained in this documentation, it is provided "as is" without warranty of any kind.

[www.domiop.com](http://www.domiop.com)